

Building for
35+
YEARS



ADVANTAGE
INDUSTRIES

Simple, Fast, Easy

EASYStair
RANGE

SIMPLE TO ORDER / DELIVERED FAST / EASY TO INSTALL

advantageindustries.com.au

BOLT TOGETHER STAIR KITS
DESIGNED FOR

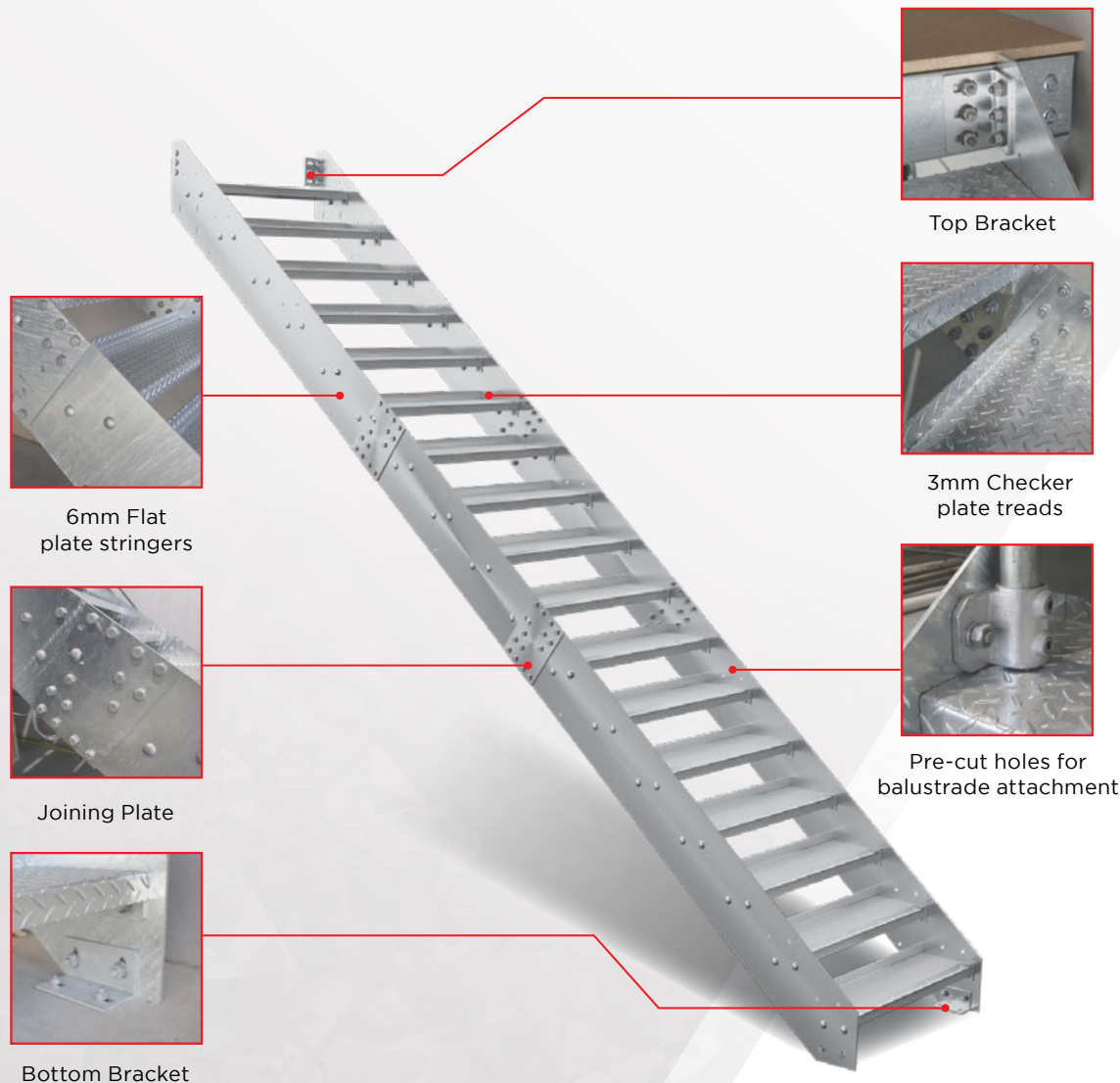
INDUSTRIAL SHEDS

FARM SHEDS

WORKSHOPS

OUTDOOR USE





Top Bracket

3mm Checker
plate treads

Pre-cut holes for
balustrade attachment

6mm Flat
plate stringers

Joining Plate

Bottom Bracket

EASYStair

RANGE

Built for Access. Designed for Toughness.

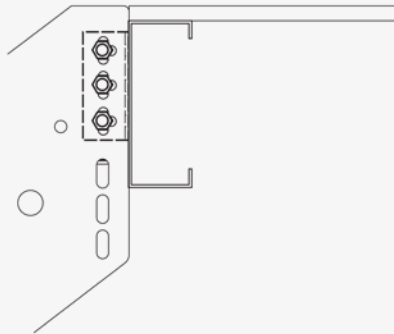
EasyStair is a heavy-duty, bolt-together steel staircase kit for demanding sites. Supplied flat-packed, **it's ideal for factories, workshops, farm sheds, machinery bays, and access to site offices or containers** – anywhere you need safe, permanent access but crane lifts are limited. Each kit can be carried in by hand and assembled in place by two people, with no heavy lifting equipment required.

Manufactured in Australia, **EasyStair** is built to handle hard daily use, harsh weather, and dirty site conditions. It's a strong, durable, and cost-effective alternative to fully welded stairs, suited to industrial, commercial, and agricultural projects where reliability comes first.

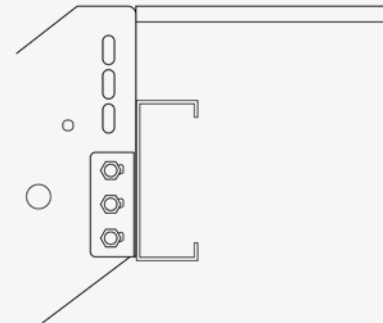
Every kit includes all parts, fixings, and a step-by-step instruction booklet with a list of required tools. Our CNC plasma-cut, bolt-together design means every hole lines up precisely – **no measuring, drilling, or on-site welding**. The result is a faster, safer install, whether done by your own team or your preferred contractor.

Mezzanine Fixing Options

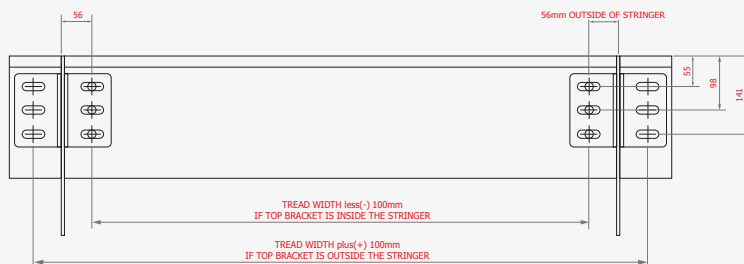
**Fixing to
Cee Purlin**



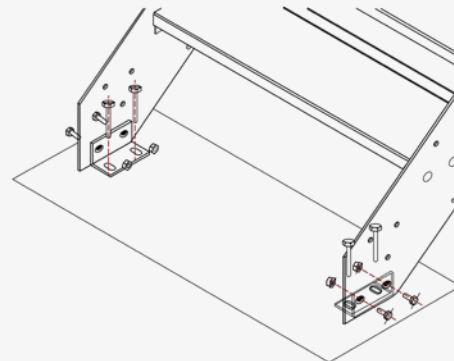
**Fixing to
Cee Purlin**



**Top Attachment
(Detail)**



**Fixing to
Floor**



EasyStair - Kit D

EasyStair with Rails One Side

- 6mm Flat Plate Stringers
- 3mm Checker Plate Treads
- 600-1190mm Wide Treads
- Up to 3400mm High
- Bolt Together Kit
- Fasteners Included
- No Welding Required
- Rails One Side (can be installed on either side)
- Hot Dipped Galvanized
- Untreated or Powder Coated Kits Available



*Rails can be installed on either side.



Bolt Together



Easy to Install



No Welding or Special Tools

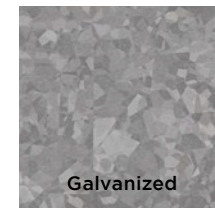


Hot Dipped Galvanized

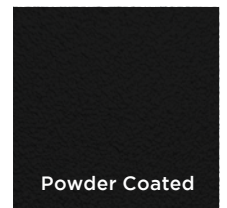


Delivered Australia Wide

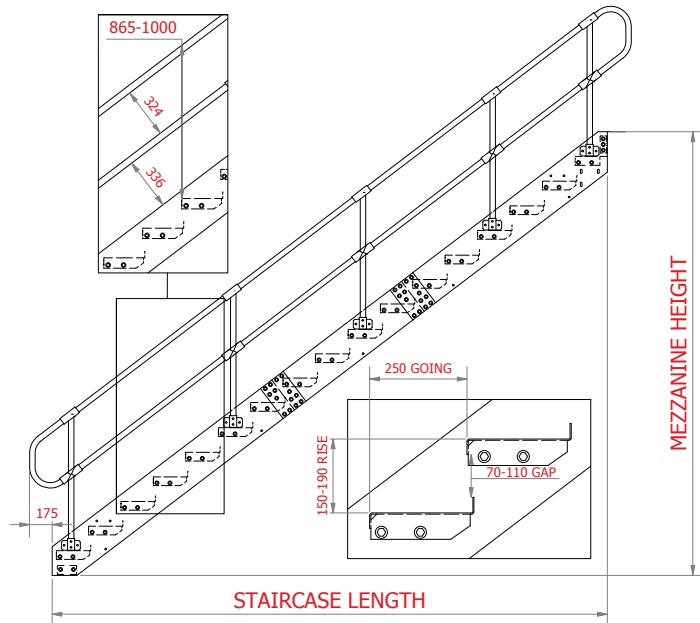
FINISH OPTIONS



Galvanized

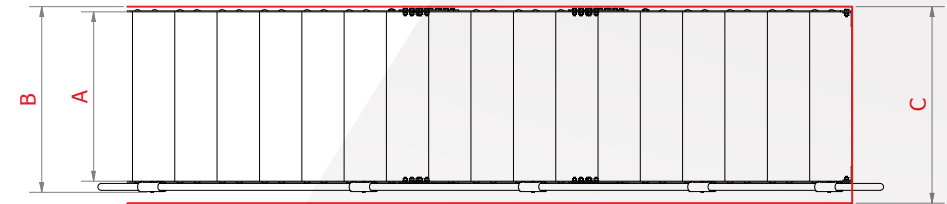


Powder Coated



Staircase Length

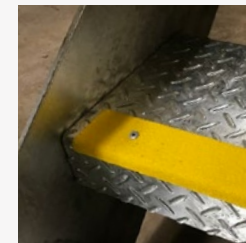
Mezzanine Height	Number of Treads	Staircase Length
Up to 2080mm	10	2530mm
Up to 2280mm	11	2780mm
Up to 2460mm	12	3030mm
Up to 2650mm	13	3280mm
Up to 2840mm	14	3530mm
Up to 3030mm	15	3780mm
Up to 3220mm	16	4030mm
Up to 3400mm	17	4280mm



Staircase and Opening Width

Tread Width (A)	Overall Width (B)	Mezzanine Opening (C)
600mm	690mm	750mm
700mm	790mm	850mm
800mm	890mm	950mm
900mm	990mm	1050mm
1000mm	1090mm	1150mm
1100mm	1190mm	1250mm
1190mm	1280mm	1340mm

Optional Nosings



EASYStair

RANGE



1800 989 140

86 Yass Road, Queanbeyan East NSW 2620
sales@advantageindustries.com.au

advantageindustries.com.au

SIMPLE TO ORDER / DELIVERED FAST / EASY TO INSTALL